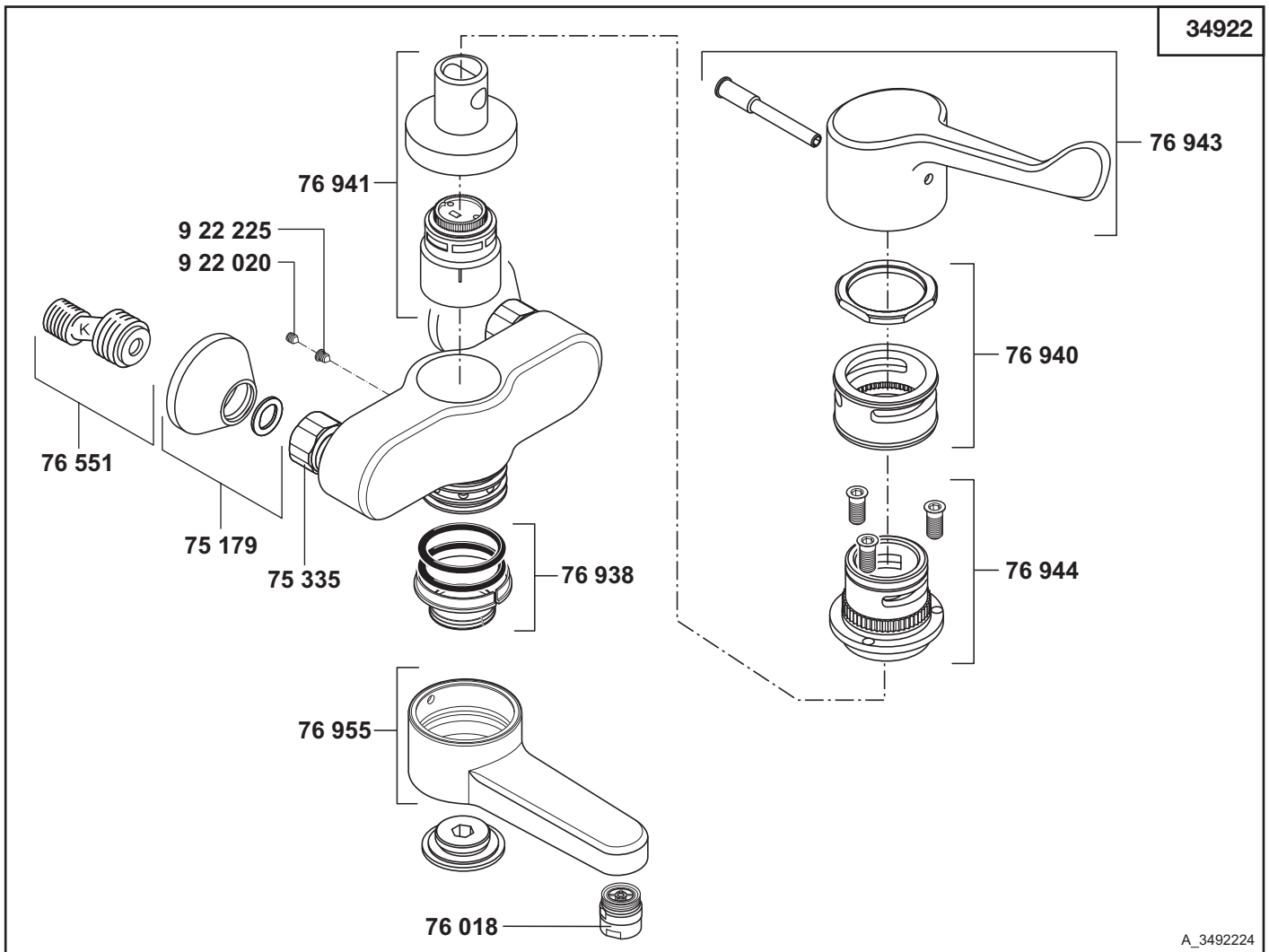


A\_349222A

34922	03/06 → Wand-Einhandmischer DN 15	single lever wall mixer DN 15	ééngreeps wandmengkraan 1/2"
	74 366 Kartusche, KLUDI MEDI-CARE	cartridge, KLUDI MEDI-CARE	cartouche, KLUDI MEDI-CARE
	75 179 Rosette	wall flange	rozet
	75 335 Wandarmaturanschluss	wall-fitting connection	wandmengkraan aansluiting
	76 018 Care-Strahlregler	Care flow straightener	Care-mondstuk
	76 551 S-Anschluss mit Schalldämpfer	S-connection with sound absorber	S-koppeling met geluiddemper
	76 938 Dichtungssatz	sealing set	set dichtingen
	76 940 Desinfektionskranz	disinfecting rim	desinfectiering
	76 943 KLUDI MEDI-CARE, Klinik-Armhebel	KLUDI MEDI-CARE, arm lever for hospital purpose	KLUDI MEDI-CARE, lange hendel
	76 944 Spannhülse	fastening cap	spanhuls
	76 955 Gussauslauf KLUDI MEDI-CARE	casted spout KLUDI MEDI-CARE	gegoten uitloop KLUDI MEDI-CARE
	922 020 Auslaufbefestigungsschraube	fastening screw for spout	bev. schroef voor uitloop
	922 225 Nirosta-Schraube	Stainless screw	Nirosta schroef



A\_3492224

34922	Wand-Einhandmischer DN 15	single lever wall mixer DN 15	ééngreeps wandmengkraan 1/2"
	75 179 Rosette	wall flange	rozet
	75 335 Wandarmaturanschluss	wall-fitting connection	wandmengkraan aansluiting
	76 018 Care-Strahlregler	Care flow straightener	Care-mondstuk
	76 551 S-Anschluss mit Schalldämpfer	S-connection with sound absorber	S-koppeling met geluiddemper
	76 938 Dichtungssatz	sealing set	set dichtingen
	76 940 Desinfektionskranz	disinfecting rim	desinfectiering
	76 941 Kartusche, KLUDI MEDI-CARE	cartridge, KLUDI MEDI-CARE	cartouche, KLUDI MEDI-CARE
	76 943 KLUDI MEDI-CARE, Klinik-Armhebel	KLUDI MEDI-CARE, arm lever for hospital purpose	KLUDI MEDI-CARE, lange hendel
	76 944 Spannhülse	fastening cap	spanhuls
	76 955 Gussauslauf KLUDI MEDI-CARE	casted spout KLUDI MEDI-CARE	gegoten uitloop KLUDI MEDI-CARE
	922 020 Auslaufbefestigungsschraube	fastening screw for spout	bev. schroef voor uitloop
	922 225 Nirosta-Schraube	Stainless screw	Nirosta schroef